

TECH TALK

Magnet AXIOM: All-in-One Case File

Geoff MacGillivray, Vice-President Product Management



MAGNET OUTRIDER™

Get Ahead with Actionable Insights



RAPID TRIAGE

Fastest Scans for CSAM
with CRC's Neula



PLUG AND PLAY

Ultra-Simple Approach for
Plug and Play Live-Scans



ACTIONABLE INSIGHTS

Evidence for Warrants,
Seizures, and Interviews



MULTI-PLATFORM

Triage Support for
Windows and Mac

**MAGNET
AXIOM™**

+



Direct Integration is now even better

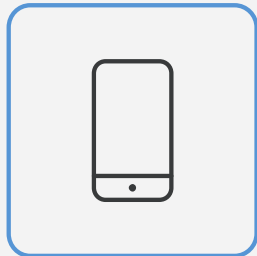
Get more out of your mobile extractions, from acquisition to analysis with the unique integration

Updated Cloud Acquisition

SELECT EVIDENCE SOURCE



COMPUTER



MOBILE



CLOUD



VEHICLE

Updated Cloud Acquisition

EVIDENCE SOURCES

CLOUD SELECT EVIDENCE SOURCE

I have proper search authorization to access the target's information stored in the cloud.

To obtain evidence from the cloud, sign in to the account with the target's user name and password or an authentication token. For some cloud platforms, you can also acquire activity that is accessible to the public.



AMAZON



APPLE



AZURE



BOX.COM



DROPOBOX



FACEBOOK



GOOGLE



IMAP/POP EMAIL



INSTAGRAM



LYFT



MEGA



MICROSOFT



MICROSOFT TEAMS



SLACK



TWITTER



UBER



WHATSAPP

Updated Cloud Acquisition

EVIDENCE SOURCES

CLOUD

SELECT GOOGLE DATA TO ACQUIRE



Platform: Google
Authentication method: User name and password
Authentication account: personalaccount@gmail.com

SELECT DATA TO ACQUIRE



GOOGLE ACCOUNT



GOOGLE DRIVE



GOOGLE APPS

SELECT DATE RANGE

Set the period of time that you want to access data from the cloud.

Date range

EVIDENCE SOURCES

CLOUD

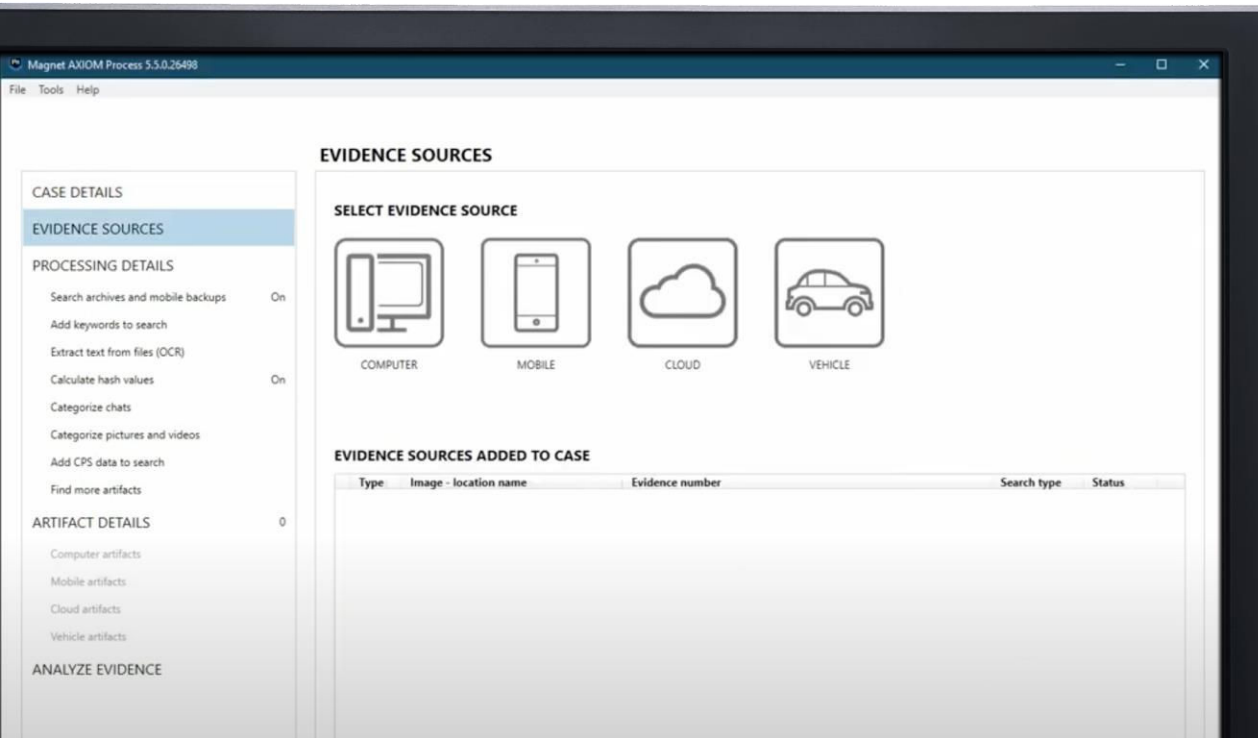
SIGN IN TO GOOGLE

Select the authentication method you want to use to sign in to Google. Depending on the authentication method and the account you sign in to, you will have different levels of access to the data you can acquire. For more information, see [Supported data sources for Google accounts in AXIOM Cloud](#).

- User name and password**
Sign in to a user account to gain the highest level of access to data in the target account. AXIOM Process will prompt you to sign in through the Google sign in page.
- External browser authentication**
If you're having trouble signing in to the account using a user name and password method, try using external browser authentication. This method only gives you access to Google Calendar, Google Drive, Gmail, Google Photos (user accounts only), and Audit logs (Google Workspace admin accounts only). Using this method, AXIOM Process will open your default browser to the Google sign in page. After you've signed in to the account, return the AXIOM Process to continue the acquisition.
- Account token**
If you have an authentication token for a Google account (for example, from the Passwords and tokens artifact in AXIOM Examine), enter it here. This method only gives you access to Google Calendar, Google Drive, Google Photos and Gmail.

Analyze All Sources in One-Case File

Computer, Mobile, Cloud and Vehicle Data



Vehicle Forensics

Berla iVe

SELECT EVIDENCE SOURCE



VEHICLE



BERLA



FILES & FOLDERS



Analytical Tools

Media Explorer, Timeline, Connections, World Map

The screenshot displays the Magnet AXIOM Examine v5.0.0.24479 interface. The top menu bar includes 'Tools', 'Process', and 'Help'. Below the menu is a search bar with the text 'Type a search term...' and a 'GO' button. The main interface is divided into several sections:

- CATEGORIZATION PROGRESS:** A horizontal bar showing progress for various categories, including 'Uncategorized - 50609', '0 - 0', '1 - 60', '2 - 12', '3 - 10', '4 - 0', '5 - 0', '6 - 0', '7 - 0', '8 - 19', and '9 - 147'. There are also buttons for 'Blur media', 'Sound on', and 'SET UP REMINDER'.
- MEDIA ITEMS (25,032 stacked):** A grid of media thumbnails. The current view shows 'Viewing items: 1-1000' and '1 of 29'. A 'STACK BY: MDS / SHA1' window is open, showing a table of items in the stack.
- PREVIEW:** A preview of the selected item 'JustineBeaufort.E01', showing a colorful, abstract image. The zoom level is set to 'ZOOM 100%'.
- RELATED ARTIFACTS (2):** A section for related artifacts.
- MEDIA CATEGORIZATION DETAILS:** A section for detailed information about the media item.

The 'STACK BY: MDS / SHA1' window shows the following table:

Image	File name	File extension	Source location
	JustineBeaufort.E01	.bytes	JustineBeaufort.E01 - Partition 2 (Microsoft NTFS, 199.9 GB)...
	10257_heart_glitter_joon.bytes	.bytes	JustineBeaufort.E01 - Partition 2 (Microsoft NTFS, 199.9 GB)...

The 'MEDIA CATEGORIZATION DETAILS' section shows the following information:

CATEGORIZATION INFORMATION

- MDS hash: 7227ef77a19906f5350ca35b0ca58
- SHA1 hash: #82c4660cc707724b08948bfc6013f194c5e215b
- Categorization source: Reviewer graded
- Category: 3 - Category 3

how much?



let's meet up

sure, but send a pic first

kk one sec

POSSIBLE EVIDENCE



MAGNET
FORENSICS®

TECH TALK

Magnet AXIOM: All-in-One Case File

Geoff MacGillivray, Vice-President Product Management